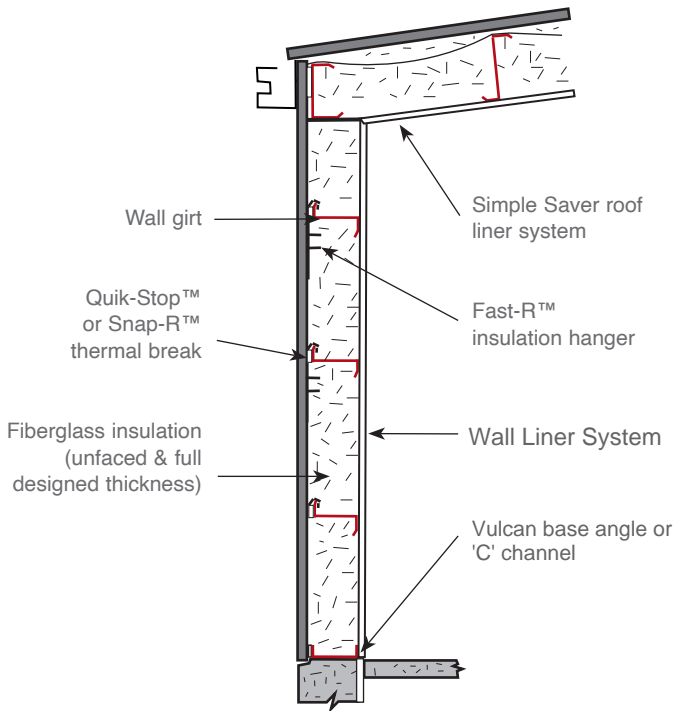


## Wall Liner Insulation Systems

### Metal Building Wall Detail



### Metal Building Wall System

Wall Liner Insulation systems are installed completely from the inside, out of the wind and weather. Unfaced insulation lengths are simply cut to fit the girt spacings and then impaled onto Fast-R™ insulation hangers. This prevents the fiberglass from sagging. The fabric liner is then installed on the inside plane of the wall to isolate the insulation and conductive girts from the conditioned air. This also provides a clean, bright, finished appearance.

Single layer systems help speed the wall sheeting process and a thick single layer of unfaced insulation is preferred to two layers of compressed laminated insulation in walls. Single layer liner systems prevent bulging and dimpling of the metal wall panels which is common with laminated insulation compressed between the panels and through-fastened to the sub-structure.

Utilization of full depth insulation between the girts will minimize loss of thermal performance caused by convection currents. Wall panel laps, trim and flashing should be sealed per codes to prevent air infiltration into the insulation. Syseal Building Wrap is also available for the ultimate in air leakage resistance.

### Quik-Stop Thermal Break



Insulative foam thermal break with adhesive back. Recommended between metal wall panels and metal sub-structure with single layer insulation systems.

Minimizes thermal conduction between metal wall panels or decking and the metal sub-structure.

108' long x 3" width x 3/16" thick

### Fast-R Wall Insulation Hanger



Preformed and punched Fast-R hangers attach to the girts or wall surfaces.

These save time and hold the insulation in permanent position.

Packed 80 hangers/ box, 23.5" long x 1" wide, 20 Gauge  
One box covers approximately 1,000 sq. ft.

### Snap-R Thermal Block



Individual "snap-on" EPS thermal blocks save installation time and will not blow away with the wind.

24" long x 4" wide x designed thickness.

Standard above flange thicknesses are 3/8" and 1" thick which accommodates a 3" purlin flange. Other thicknesses are available to create the required space for any desired insulation thickness to fully expand!

Simple Saver™ Wall Systems	
Preinstalled R-Value	Thickness
R-10	3"
R-11	3 1/2"
R-13	4"
R-19	6"
R-25	8"
R-30	9"
R-38**	12"